

150.23
L62
2009

*R CHOICES OF HIGH SCHOOL STUDENTS IN SELECTED
PUBLIC HIGH SCHOOLS IN DISTRICT II, CAVITE*

Thesis

AILINNE L. LIM

College of Arts and Sciences
CAVITE STATE UNIVERSITY
Indang, Cavite

Cavite State University (Main Library)



T 3916

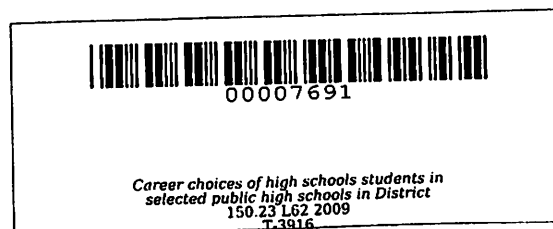
THESIS/SP 150.23 L62 2009

April 2009

**CAREER CHOICES OF HIGH SCHOOL STUDENTS IN SELECTED PUBLIC
HIGH SCHOOLS IN DISTRICT II, CAVITE**

**Undergraduate Thesis
Submitted to the Faculty of the
Cavite State University
Indang, Cavite**

**In partial fulfillment for the
requirements for the degree of
Bachelor of Science in Psychology**



AILINNE L. LIM
April 2009

ABSTRACT

LIM, AILINNE L. Career Choices of High School Students in Selected High Schools in District II, Cavite. Undergraduate thesis. Bachelor of Science in Psychology. Cavite State University, Indang Cavite. April 2009 Adviser: Dr. Cecilia B. Banaag.

This study attempted to determine the factors that influence career choices of male and female high school students in selected public high schools in District II, Cavite for the School Year 2008 – 2009.

Specifically, the study sought to determine: 1) the career choices of male and female high school students in terms of 1st , 2nd and 3rd choice; 2) the factors that influence the career choices of male and female high school students in terms of the following indicators which is Person, Events, and Other factors; 3) the significant differences between the career choices of male and female high school students; 4) Determine if factors influencing career choices of high school students differ with gender.

The study made used of descriptive method of research. Instrument used in data gathering were the modified 49 items Career Influence Questionnaire patterned from Doud, 2003.

The study was conducted in selected public high schools in District II, Cavite. Using fish bowl technique and proportional allocation, the respondents were determined. It consists of 188 males and 188 females. The statistical measures employed were percentage and frequency, standard deviation and mean, chi – square and Z – test, and Mann Whitney – U test.

First, second and third career choices of students were gender stereotype. Members of the family, relative's, and school related events are influential to the career

choices of male and female high school students. Lastly family relation, career development, school related and informational materials are the other factors that are found out to be influential to male and female high school students in terms of choosing their career choice.

Male and female students did not differ in their choice. They both preferred computer related, arts and teaching, while they least preferred becoming lawyer/Pilot. On the other hand, male and female high schools students were not in one in choosing careers like Engineering, Technical/Voc'l courses, computer and military/criminology. More males preferred Engineering, Seaman/Marine, Military/Criminology and Technical/Voc'l courses while female preferred MassCom, Psychology, Business/Accounting, Medical related and HRM/Tourism.

Generally, influence on career choices of male and female high school students has no difference. Person and event factor did not differ with gender. However, other factors such as location of the job away from family, scholarship grant, and extra – curricular school activities were different in male and female respondents.

TABLE OF CONTENT

| | Page |
|---|-------------|
| TITLE PAGE | i |
| APPROVAL SHEET | iii |
| BIOGRAPHICAL DATA | iv |
| ACKNOWLEDGMENT | v |
| ABSTRACT | ix |
| LIST OF TABLES | xi |
| LIST OF APPENDICES..... | xii |
| INTRODUCTION | 1 |
| Statement of the Problem | 3 |
| Objective of the Study | 3 |
| Hypotheses | 4 |
| Significance of the Study | 5 |
| Time and Place of the Study | 6 |
| Scope and Delimitation | 6 |
| Conceptual Framework | 8 |
| Definition of Terms | 11 |
| REVIEW OF RELATED LITERATURE | 12 |
| Career choices | 12 |
| Gender | 13 |
| Person | 16 |

| | |
|--|-----------|
| Event | 20 |
| Other Factor | 22 |
| Synthesis of the Literature Review | 25 |
| METHODOLOGY | 26 |
| Research Design | 26 |
| Sampling Procedure | 26 |
| Respondents | 37 |
| Collection of Data | 27 |
| Research Instrument | 28 |
| Validity and Reliability | 29 |
| Statistical Analysis | 29 |
| PRESENTATION, DISCUSSION AND ANALYSIS OF DATA | 33 |
| First Career Choices | 33 |
| Second Career Choices | 35 |
| Third Career Choices | 37 |
| Influence of Person Factor | 39 |
| Influence of Event Factor | 41 |
| Influence of Other Factor | 44 |
| Difference of Career Choices of Male and Female | 49 |
| Difference of Factors Influencing Career Choices | 51 |
| SUMMARY, CONCLUSION AND RECOMMENDATION | 53 |
| Summary of Findings | 53 |
| Conclusions | 54 |

| | |
|-----------------------|----|
| Recommendations | 55 |
| BIBLIOGRAPHY | 57 |
| APPENDICES | 60 |

LIST OF TABLES

| Table | Page |
|--|-------------|
| 1 First Career Choices of High School Students of Selected High Schools in District II, Cavite | 33 |
| 2 Second Career Choices of High School Student..... of Selected High Schools in District II, Cavite | 35 |
| 3 Third Career Choices of High School Students of Selected High Schools in District II, Cavite | 37 |
| 4 Influence of Person Factor in High School Students | 39 |
| 5 Influence of Event Factor in High School Students | 41 |
| 6 Influence of Other Factor in High School Students | 44 |
| 7 Differences of Career Choices of Male and Female High School Students in Selected High Schools in District II, Cavite | 49 |
| 8 Difference on the Factors Influencing Career Choices of Male and Female High Schools Students in Selected High Schools in District II, Cavite | 51 |

LIST OF APPENDICES

| Appendix | Page |
|--|-------------|
| A. Letter of Request ton the Division Superintendent | 60 |
| B. Letter of Request to the Principals | 61 |
| C. Summarized Result of the Statistical Analysis | 65 |
| D. Certificate from the Statistician | 76 |
| E. Resume | 77 |

CAREER CHOICES OF HIGH SCHOOL STUDENTS IN SELECTED PUBLIC HIGH SCHOOLS IN DISTRICT II, CAVITE

Ailinne L. Lim

A thesis manuscript presented to the faculty of the Department of Social Sciences and Humanities, College of Arts and Sciences, in partial fulfillment of the requirements for graduation with the degree of Bachelor of Science in Psychology with Contribution No. _____ . Prepared under the supervision of Dr. Cecilia B. Banaag

INTRODUCTION

Each year, all senior high school students with their family are excited in the commencement activity of their school. For them this will serve as the start of their new adventure in life. Some are nervous and some are totally excited to that very moment of their life. Parents, relatives, teachers, and community members congratulate the students and ask, what the plans following graduation are. Majority of them plan to pursue college degree, while others plan to have work to support the family”.

Nowadays, many students are studying, but not all of them have effective preferred career choice because of different factors that influence their choices.

According to National Statistics Office and Department of Education, from year 2000, 92.3 percent are studying in the Philippines with 92.1 percent of males and 92.5 percent of females. In 2003, 93.4 have been recorded with 92.6 of males and 92.3 of females. In Southern Tagalog in year 2000, 94.0 percent were mapped out with 94 percent males and 94.1 percent females. In 2003, 94.2 percent was cited with 94.1 percent males and 94.3 percent females.