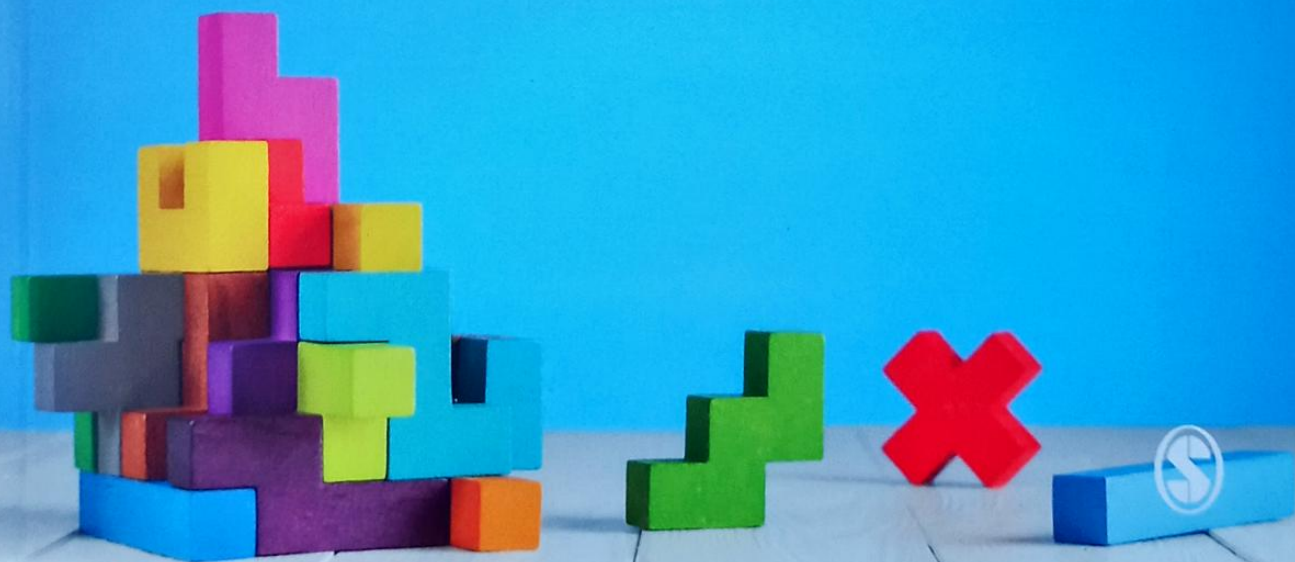
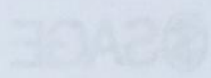


LEADING PRIMARY MATHEMATICS

CATHERINE FOLEY,
JANE McNEILL &
STEPHANIE SUTER





LEADING PRIMARY MATHEMATICS

CATHERINE FOLEY,
JANE McNEILL &
STEPHANIE SUTER



Los Angeles | London | New Delhi
Singapore | Washington DC | Melbourne



Los Angeles | London | New Delhi
Singapore | Washington DC | Melbourne

SAGE Publications Ltd
1 Oliver's Yard
55 City Road
London EC1Y 1SP

SAGE Publications Inc.
2455 Teller Road
Thousand Oaks, California 91320

SAGE Publications India Pvt Ltd
B 1/1 Mohan Cooperative Industrial Area
Mathura Road
New Delhi 110 044

SAGE Publications Asia-Pacific Pte Ltd
3 Church Street
#10-04 Samsung Hub
Singapore 049483

Editor: James Clark
Assistant Editor: Diana Alves
Production editor: Martin Fox
Marketing manager: Dilara Attygalle
Cover design: Naomi Robinson
Typeset by: C&M Digital (P) Ltd, Chennai, India
Printed in the UK

© Catherine Foley, Jane McNeill and Stephanie Suter 2019

First published 2019

Apart from any fair dealing for the purposes of research or private study, or criticism or review, as permitted under the Copyright, Designs and Patents Act, 1988, this publication may be reproduced, stored or transmitted in any form, or by any means, only with the prior permission in writing of the publishers, or in the case of reprographic reproduction, in accordance with the terms of licences issued by the Copyright Licensing Agency. Enquiries concerning reproduction outside those terms should be sent to the publishers.

Library of Congress Control Number: 2018954363

British Library Cataloguing in Publication data

A catalogue record for this book is available from the British Library

ISBN 978-1-4739-9796-7
ISBN 978-1-4739-9797-4 (pbk)

At SAGE we take sustainability seriously. Most of our products are printed in the UK using responsibly sourced papers and boards. When we print overseas we ensure sustainable papers are used as measured by the PREPS grading system. We undertake an annual audit to monitor our sustainability.

LIST OF CONTENTS

List of figures	vii
List of tables	xi
About the authors	xiii
Acknowledgements	xv
Introduction	xvii
Part A Leading mathematics learning	1
1 Becoming a leader of mathematical learning	3
2 Attitudes, beliefs and mindsets	21
Part B Extending pedagogy	39
3 International perspectives	41
4 Mathematical representation	59
5 Developing fluency	77
6 Problem solving and reasoning	95
Part C Leading inclusive mathematics teaching	113
7 Assessing mathematical learning	115
8 Inclusive practice in mathematics	137

9	Overcoming barriers to learning in mathematics	153
10	Mathematics across the curriculum	173
Part D Continuing development		189
11	Children and families: partners in learning	191
12	Continuing professional development	211
Index		227

'This book will be of use to everyone involved in teaching primary mathematics, ranging from pre-service teachers, to experienced mathematics educators. It provides an appropriate balance of relevant literature and classroom activities, to support those wanting to develop their understanding of mathematics teaching and learning'.

DR GWEN INESON, SENIOR LECTURER IN MATHEMATICS EDUCATION, BRUNEL UNIVERSITY LONDON

This book provides insight into 'what mathematics leadership looks like in practice' and how you can develop from a confident teacher into a curriculum subject leader. It does this through a careful blend of pedagogy and practical application, supported by real-world case studies and opportunities to reflect critically on your classroom practice.

KEY COVERAGE INCLUDES:

- The planning and application that underpins subject leadership
- How international perspectives can influence your leadership of mathematics
- Developing fluency through problem solving and reasoning
- Championing inclusive practice
- Assessing children's understanding 2.4D³
- Reflecting on your own teaching in order to develop the practice of others.

This is essential reading for anyone studying primary mathematics on initial teacher education courses, including undergraduate (BEd, BA with QTS) and postgraduate (PGCE, PGDE, School Direct and SCITT) routes, NQTs seeking to develop into curriculum leadership roles and those already leading mathematics in schools.

CATHERINE FOLEY is Associate Professor of Mathematics Education at the University of Reading.

JANE McNEILL is an independent mathematics consultant.

STEPHANIE SUTER is Senior Lecturer in Mathematics Primary Education at Bath Spa University.

 **SAGE** www.sagepublishing.com
Los Angeles | London | New Delhi | Singapore | Washington DC | Melbourne

ISBN 978-1-4739-9797-4



9 781473 997974

Cover Image © Radachynskiy | Getty Images

Cover Design © Naomi C. Robinson